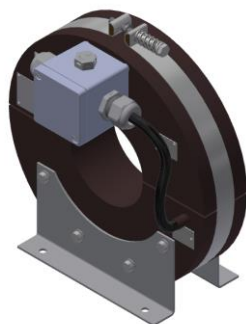




Type RKUF 2308 size 1 to 6

Low Voltage CT, split-core type for outdoor use

Data Sheet



Description
Split-core type ct for outdoor use
For cables up to Ø 85 mm
Standard accessories: plastic terminal box, 2 mounting feet
Non-standard accessory: <ul style="list-style-type: none"> • 1 wall bracket
Mounting in any position
The current transformer is maintenance-free

Technical Data	
Standard	IEC 61869-1 and 2
Rated primary currents I_{pr}	60 ... 3000 A
Rated secondary currents I_{sr}	1 A or 5 A
Metering / protection classes (depends on primary current)	0.2; 0.5S; 0.5; 1; 3 (5P..; 10P..)
Rated burdens (depends on primary current and class)	1 ... 100 VA
Number of cores	1
Highest voltage for equipment U_m	0.72 kV (1.2 kV on request)
Test voltage	3 kV, 50 Hz, 1 min (at U_m 1.2 kV: 6 kV, 50 Hz, 1 min)
Rated frequency	50 Hz (60 Hz on request)
Rated continuous thermal current I_{cth}	1.0 I_{pr} (> 1.0 I_{pr} on request)
Rated short-time thermal current I_{th} 1s	100 x I_{pr} (> 100 x I_{pr} on request)
Rated dynamic current I_{dyn}	2.5 x I_{th}
Instrument security factor (depends on burden)	FS5 ... FS30
Phase-to-phase centre line distance	≥ 230 mm
Place of application	Outdoor up to 1000 m above sea level (other ranges on request)
Ambient temperature	Operation: -5°C < T < +40° C Storing: -25°C < T < +40° C (other ranges on request)
Insulation class	E
Housing degree of protection	IEC EN 60529, DIN VDE 0470-1: IP44 (IP55 on request)
Earthing	See DIN VDE 0100-557
Housing	Polyurethane cast resin
Terminal box	Polyethylenterephthalat (PTEP), cable gland, PA, M20x1.5 for cables Ø 8...13 mm (on request M25x1.5 for cables Ø 11...17 mm)
Secondary terminals	Single connectors, nickel plated brass, combined headed screws of size M5 ($M_A=3.5$ Nm), for wires up to 4 mm ² (stranded) / 6 mm ² (solid)
Outer dimensions W / H / L	230 / 245 / 109, 119, 159, 179, 199 or 219 mm (size 1, 2, 3, 4, 5 or 6) (incl. terminal box)
Weight	Does vary
If no burden is connected, secondary terminals have to be short-circuited.	

Errors excepted and technical modifications reserved.

Ritz Instrument Transformers GmbH, Wandsbeker Zollstr. 92 – 98, D-22041 Hamburg / Germany
Phone +49 40 / 51 123 -0 · Fax +49 40 / 51 123 -111 · www.ritz-international.com

Stand 25.05.2018 VN 20180474_Rev. 0



GERMANY HAMBURG · WIRGES · KIRCHAICH · DRESDEN
AUSTRIA MARCHTRENK | HUNGARY KECSKEMÉT | CHINA SHANGHAI | USA HARTWELL

